

EXHAUSTO

SubDuct Riser SDR

Use

The purpose of the EXHAUSTO Subduct Riser, SDR, is to eliminate the need for fire and smoke dampers in commercial multi-story buildings. This is achieved by using a rectangular shaped subduct that rises 22 inches into the main exhaust shaft. The SDR attaches to the appliance duct using standard vent fittings.

Typical uses for SDR's include clothes dryer exhaust, kitchen hoods and bathroom exhaust applications.

Description

The SDR is made of 26 gauge galvanized steel. The four models are made to fit 4, 6, 8, and 10 inch ducts via a female vent connection. The unit is surrounded by a 3/8" external flange to provide secure mounting to the inside wall of the main duct. Each SDR model will rise 22" into the main shaft; the minimum required by the International Building Code.

A conventional subduct has a round cross section. The use of these may result in an unnecessary decrease of the flow area in the exhaust shaft. The rectangular cross section area of the EXHAUSTO SDR minimizes this effect by mounting flush against the shaft wall. This will reduce the velocity of the air through the shaft as well as decrease the generated noise. When a SDR is used in place of a round subduct, the size of the main shaft may be decreased while still maintaining the same air flow through the exhaust shaft.

Material

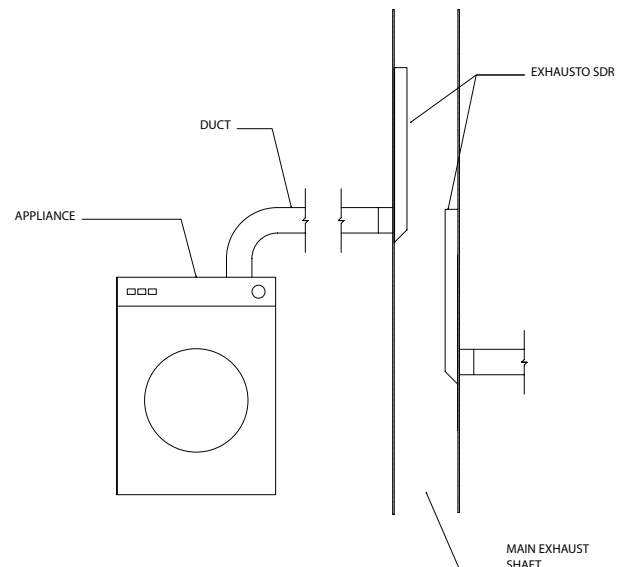
26 Gauge Galvanized Steel

Listings

Compliant to IBC 2006, Section 716.5.

Warranty

2 year factory warranty



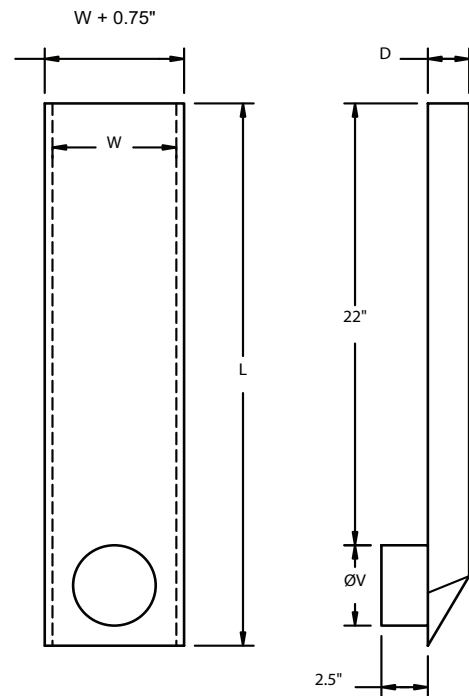
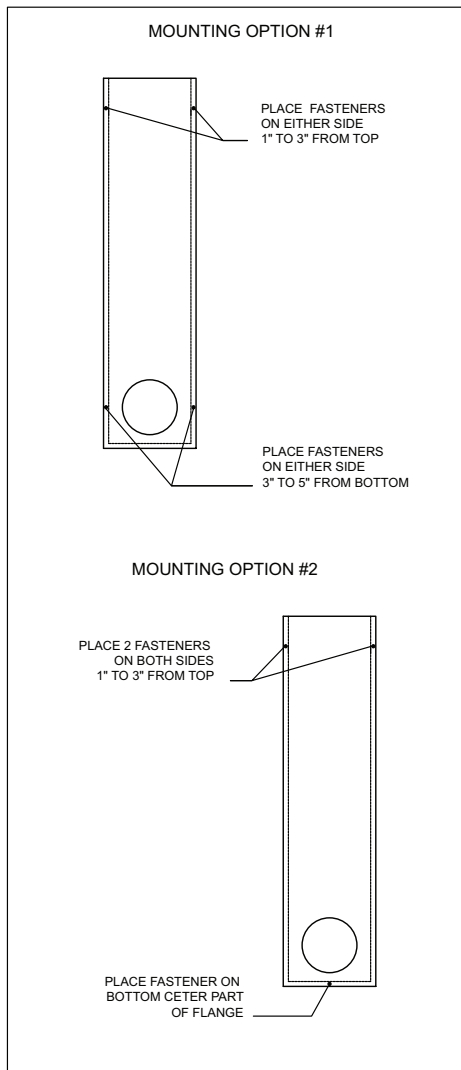
Specifications

| SubDuct Riser | | | | |
|----------------------|---------|---------|---------|---------|
| | SDR 04 | SDR 06 | SDR 08 | SDR 10 |
| Length (L) | 27.0 in | 28.0 in | 29.0 in | 30.0 in |
| Width (W) | 6.0 in | 9.0 in | 12.0 in | 15.0 in |
| Depth (D) | 2.0 in | 3.5 in | 4.5 in | 6.0 in |
| Vent Connection (ØV) | 4.0 in | 6.0 in | 8.0 in | 10.0 in |

Installation

The SDR should be mounted flush against the inside of the main exhaust shaft by fastening screws or rivets through the external flange. The user may install the SDR using one of the mounting options shown in Diagram 1.

Diagram 1:



Note: When the SDR is being used to exhaust a clothes dryer, the screws or rivets MUST be fastened from the inside of the shaft so that the ends do not protrude into the shaft. See Diagram 2.

Diagram 2:

