

EXHAUSTO

Power Venter RSIB

Use

The EXHAUSTO RSIB Power Venter is intended for use as an in-line draft inducer. It can be installed in-line in the chimney or stack. It is specifically designed for applications where reliable and efficient operation, low noise level, low energy consumption, variable speed and compact design are of utmost importance.

The RSIB is for use with condensing and non-condensing appliances operating at flue gas temperatures below 575°F (300°C).

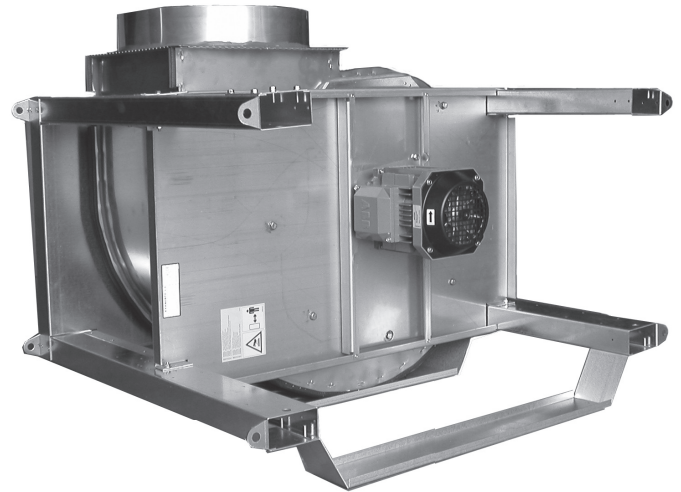
Typical uses are: mechanical venting of gas-fired boilers and water heaters. For indoor or outdoor installation.

Description

The EXHAUSTO RSIB Power Venter is an efficient high-temperature ventilator with backward-inclined impeller. The ventilator housing is made of stainless steel and equipped with an energy-efficient, totally enclosed, variable speed motor, which is mounted outside the air stream. The design is a Type B, Spark Resistant Construction. The front of the ventilator slides on rail and provides easy access to the inside of the fan and the duct connections. The motor and impeller are mounted on the front and are secured with bolts. The stack connections are of the slip connection type. The ventilator can be mounted on vibration insulated support legs or from ceiling mounting brackets. The RSIB model is approved for temperatures up to 575°F (300°C). The RSIB is a component in the CASI, Chimney Automation System.

Material

The inner housing is made of 316L stainless steel while the outer housing is in galvanized steel. The impeller is of the backward inclined type made of cast aluminum.



Motor

Commercial grade, totally enclosed (TEFC), variable speed, Class A insulation class motor with sealed and permanently lubricated bearings. Thermal overload protection.

Accessories

EBC 30 or EBC 12 Modulating Fan Control, Variable Frequency Drive (VFD), PDS

Listings

ETL listing # E109205550D
UL378-Draft Equipment
CSA-CAN3-B255-M81-Mechanical Flue Gas Exhausters

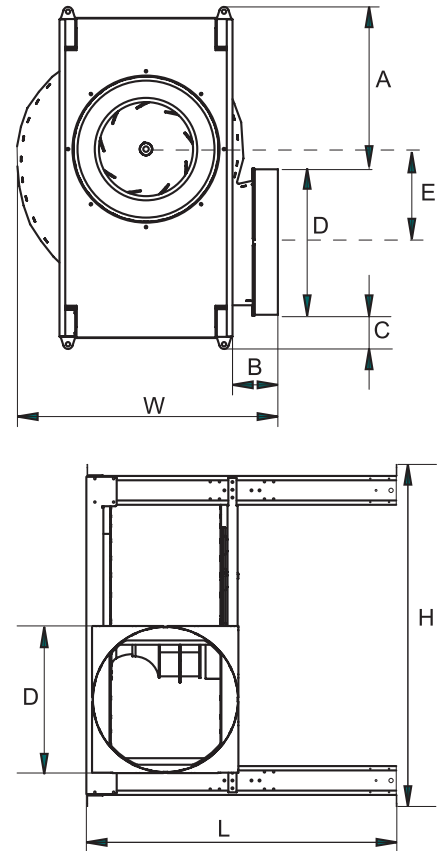
CE compliant
Manufactured at ISO9001 certified plant
Complies with and meets Type B, Spark Resistant Construction per AMCA standard 99-0401 classifications of Spark Resistant Construction.

Warranty

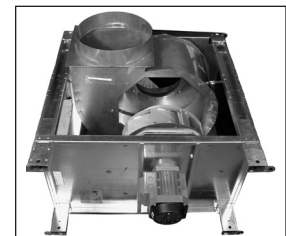
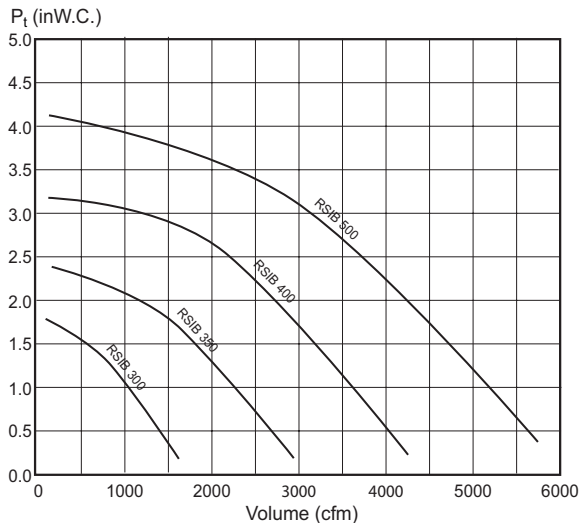
2 year factory warranty
10 year warranty against corrosion perforation

Specifications

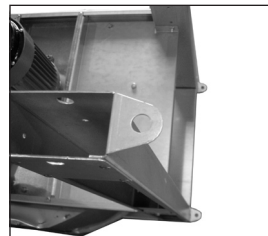
Model		RSIB 300	RSIB 350	RSIB 400	RSIB 500	
Fan Type		Centrifugal Impeller (B-wheel)				
Motor Type		TEFC (Class H)				
Voltage	VAC	1 x 120	3 x 200-240 / 3 x 440-480			
Amperage	Amps	5.8	3.6 / 1.7	6.5 / 2.9	9.0 / 4.0	
Motor	Output HP	0.5	1.0	2.0	3.0	
	kW	0.35	0.75	1.5	2.2	
RPM		1600	1740			
Duct Connection (Nominal)	in	12	14	16	20	
	mm	300	350	400	500	
Dimensions	H	in	36.07	36.07	43.55	46.70
		mm	916	916	1106	1186
	L	in	25.59	25.59	34.25	34.25
		mm	650	650	870	870
	W	in	25.99	28.04	32.09	36.56
		mm	660	712	815	903
	B	in	4.81	5.63	6.46	6.22
		mm	122	143	164	158
	A	in	19.73	16.62	21.58	22.09
		mm	501	422	548	561
	D	in	11.8	13.8	15.8	19.8
		mm	300	351	452	503
	C	in	4.26	3.90	5.44	4.57
		mm	108	99	138	116
	E	in	18.09	17.86	20.18	22.82
		mm	459	454	513	580
Weight	lbs	70	84	132	170	
	kg	32	38	60	77	



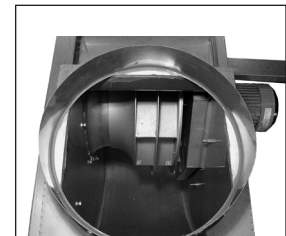
Capacity:



Easy access to inside of fan



Prepared for ceiling mounting



Cast-aluminum impeller