

EXHAUSTO

Over Pressure Switch OPS

Description

The OPS, Over-Pressure Switch, is an adjustable differential pressure switch that is used in conjunction with EXHAUSTO MODS, Modulating Over-Draft Damper Systems. It is used for over-pressure protection, so if excessive pressure builds up between the boiler outlet and the system damper, the switch will shut down the heating appliance, while the EBC 30 control unit drives the damper completely open to relieve the pressure.

Application

Differential pressure monitoring in firing and ventilation systems.

Suitable for air, flue and exhaust gases.

Material

The switch housing and the internal switch are made of polycarbonate. The diaphragm is made of NBR (silicone), while the switching contact is made in fine silver.

Approvals

The Honeywell switch is CE approved according to low-voltage directive EEC 73/23.

Warranty

2 year factory warranty.

Maximum Load	1.5 Amps @ 120-240 V AC
Range of Operation	.08 to .60"W.C. (20 to 200 Pa)
Temperature Limits	-5°F to +185°F (-20 to +85°C)
Max. Pressure	1.4 PSI (100 mbar)
Conduit Connection	1/4" Solderless Quick Connect Terminals
Pressure Connections	Two plastic tubes, outside diameter of 1/4" (6.0mm)
Weight	4.9 oz. (0.14kg)

Specifications

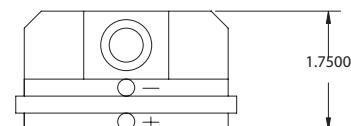
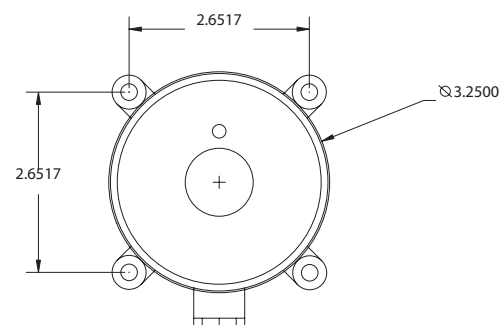
Functional Description

Differential pressure switch in pressure and vacuum ranges. The differential pressure acts via diaphragm against the force of setting spring on the microswitch. The pressure switch operates without any auxiliary power.

Specifications are subject to change without notice.

EXHAUSTO Inc.
1200 Northmeadow Pkwy.
Suite 180
Roswell, GA 30076

P: 770.587.3238
F: 770.587.4731
T: 800.255.2923
info@exhausto.com
us.exhausto.com



OPS Switching Function

