

EXHAUSTO

Box Ventilator BESF

Use

The EXHAUSTO BESF Box Ventilator is intended for use as an exhaust or supply air fan. The BESF should be installed in-line in the duct system. It is specifically designed for applications where reliable and efficient operation, low noise level, low energy consumption, variable speed and compact design are of utmost importance.

Typical uses are: residential kitchen exhaust and commercial and residential combustion air supply. For indoor installation only.

Description

The EXHAUSTO BESF Box Ventilator is an efficient ventilator with a forward curved impeller. The ventilator housing is made of galvanized steel and insulated with fiberglass mats. The insulation reduces noise level and the risk of condensation.

The BESF is equipped with an energy-efficient, totally enclosed (TEFC), variable speed motor.

A service door provides easy access to the inside of the fan and the duct connections. The motor and impeller are mounted on the door and the door has lockable snap locks.

The duct connections are slip connections with built-in rubber seals. An optional flexible connection is available.

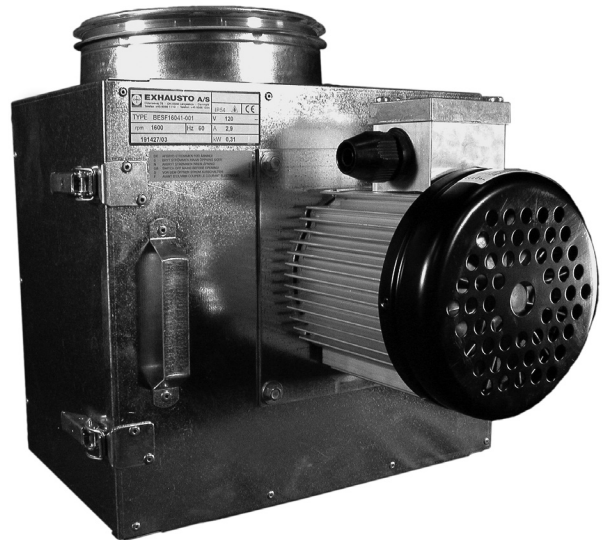
The ventilator can be mounted on the floor with vibration resistant support legs or from ceiling mounted brackets.

Material

The housing is made of galvanized steel and insulated with 1.25" thick fiberglass mats. The impeller is forward inclined and made of 304 SS.

Motor

Commercial grade, totally enclosed, variable speed single-phase motor. Class H insulation class. With sealed and permanently lubricated ball bearings. Thermal overload protection.



Accessories

Flexible connections, FLF
Proven Draft Switch, PDS
Fan Speed Control, FSC

Listings

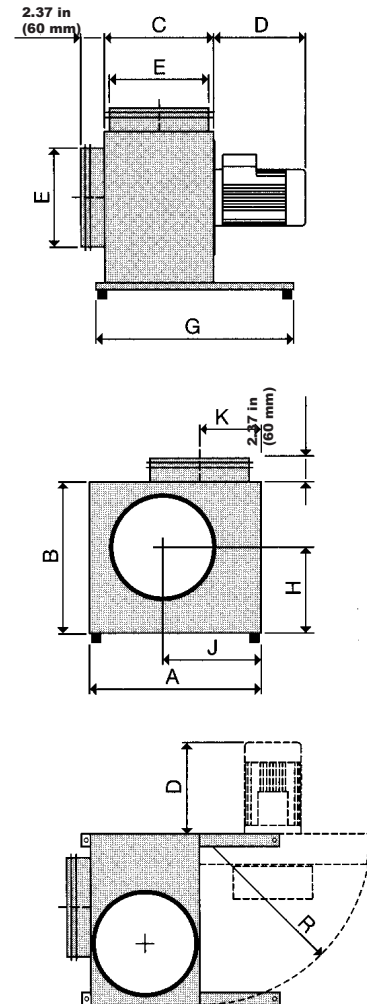
ETL listing #E109205550D
UL705 - Power Ventilator
CE compliant
Manufactured at ISO9001 certified plant

Warranty

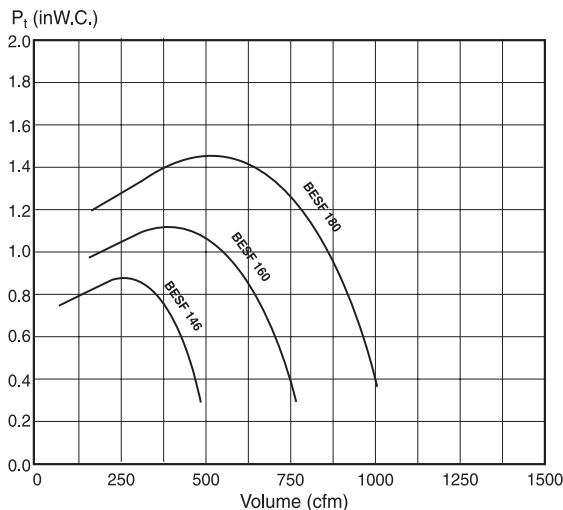
2 year factory warranty
10 year warranty against corrosion perforation

Specifications are subject to change without notice.

Model		BESF 146	BESF 160	BESF 180
Fan Type		Centrifugal Impeller (F-Wheel)		
Motor Type		TEFC		
Voltage	VAC	1x120		
Amperage	Amps	1.2	2.9	5.8
Motor Output	HP	0.1	0.2	0.5
	kW	0.08	0.16	0.35
RPM		1600		
Weight	lbs	28	38	60
	kg	13	17	27
Duct Connection	E in	7	8	8
	mm	177	200	200
Dimensions	A in	13.60	14.57	16.15
	mm	345	370	410
B	in	11.62	12.60	13.98
	mm	295	320	355
C	in	7.88	9.26	9.26
	mm	200	235	235
D	in	4.33	5.52	7.68
	mm	110	140	195
G	in	13.78	15.75	15.75
	mm	350	400	400
H	in	6.50	7.10	7.88
	mm	165	180	200
J	in	7.88	8.27	9.26
	mm	200	210	235
K	in	4.33	5.12	5.12
	mm	110	130	130
R	in	13.60	14.57	16.15
	mm	345	370	410



Capacity



Sound Diagram

Model	Lw dB							Lp DB (A)
	125Hz	250Hz	500Hz	1000Hz	2000Hz	4000Hz	8000Hz	
BESF 146	48	48	48	41	38	35	32	40
BESF 160	53	54	51	43	39	36	32	41
BESF 180	55	60	53	46	41	36	32	47

Tolerance: +/-3 dB

Lw: Sound Power Level. Noise to surroundings.

Lp: Sound Pressure Level. 3 feet (1 m) from the center of the fan.

Note: A sound power level of 30 dB is equivalent to a voice at a very soft whisper. A sound power level of 70 dB is equivalent to a voice at conversational level.