



EXHAUSTO Box Ventilator **BESB**

Description

The EXHAUSTO BESB Box Ventilator is a high-efficiency ventilator with a backward curved centrifugal impeller. The BESB is completely insulated to reduce noise and condensation. The ventilator housing is galvanized steel, while the impeller is cast aluminum.

The BESB is equipped with an energy-efficient, totally enclosed, variable speed motor (TEFC). A service door is provided allowing easy access to the motor and impeller.

BESB can be used for combustion air supply or exhaust systems where reliability, efficiency and low noise are important factors.

The BESB Box Ventilator is a component in the Modulating Combustion Air System (MCAS) and Mechanical Dryer Venting System (MDVS).

Material

The housing is galvanized steel and insulated with fiber mats. Impeller is cast aluminum and balanced with permanently attached lead balancing weights.

Motor

Commercial grade, totally enclosed, variable speed 1 or 3-phase motor. Class B insulated, IP54 Protection Class. Sealed ball bearings. Thermal overload protection.

Standard Equipment

Slip connections with silicone seals.

Accessories

EBC 12, Modulating Fan Control
EBC 14, Pressure Control
EBC 30, Modulating Pressure Control
Variable Frequency Drive, VFD
Flexible connections, FLF
Proven Draft Switch, PDS



Listings

ETL listing #E109205550D

UL705-Power Ventilator

Suitable for venting lint-laden air from dryers.

Component in an ETL Listed MCAS System,
(ETL Report J99*18091-003)

Component in an ETL Listed MDVS System,
(ETL Report J99*18091-004)

CE compliant

Manufactured at ISO9001 certified plant

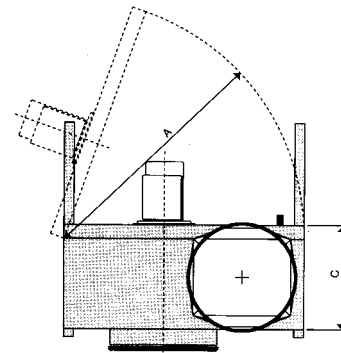
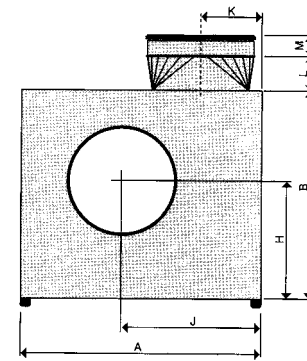
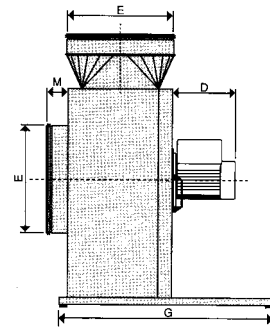
Warranty

2 year factory warranty

Specifications are subject to change without notice.

Specifications

Model		BESB 250	BESB 315	BESB 400	BESB 500
Fan Type		Centrifugal Impeller (B-Wheel)			
Motor Type		TEFC			
Voltage	V AC	1x120	3 x 200-240/3x460-480		
Amperage	Amps	5.8	3.6/1.7	6.5/2.9	9.0/4.0
Motor Output	HP	0.5	1	2	3
	kW	0.35	0.75	1.5	2.2
RPM		1600	1720		
Weight	lbs	110	126	167	227
	kg	50	57	76	103
Duct Connection	E in	10	12	16	20
	mm	250	315	400	500
Dimensions	A in	30.91	30.91	35.24	38.98
	mm	785	785	895	990
B	in	24.61	26.57	30.51	33.86
	mm	625	675	775	860
C	in	12.80	13.98	15.35	16.73
	mm	325	355	390	425
D	in	7.68	7.68	10.24	12.20
	mm	195	195	260	310
G	in	31.50	31.50	31.50	33.46
	mm	800	800	800	800
H	in	13.78	15.16	17.32	19.09
	mm	350	385	440	485
J	in	18.90	17.91	20.67	22.83
	mm	480	455	525	580
K	in	7.28	8.08	9.84	11.81
	mm	185	205	250	300
L	in	4.92	4.92	4.92	6.69
	mm	125	125	125	170
M	in	2.36	3.15	3.15	2.36
	mm	60	80	80	60



Capacity

P_t (inW.C.)

